



WLS 50 / WLS 75

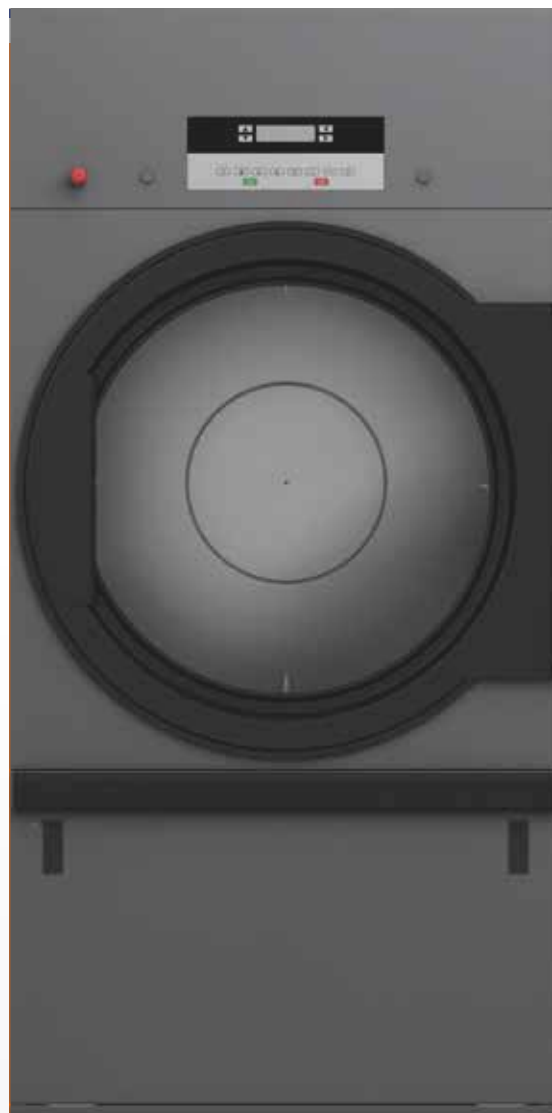


Features

- Standard stainless steel drum with large diameter
- Easy control - Easy to use microprocessor
- Radial airflow with
 - Maximal heat transfer
 - Low energy consumption
 - Short drying time
- Large door opening (Ø81cm) for easy loading and unloading

Options

- Coin operated version
- Reversing drum
- Professional control - Full control programmer
- Residual moisture control:
 - safe drying of delicate linen
 - humidity detection in %
 - ideal for dry cleaners, fire departments
 - available on Easy and Professional control

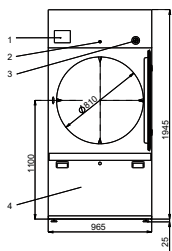


Dimensions & Specifications

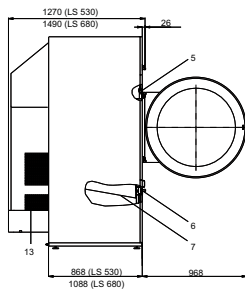
Type		WLS 50	WLS 75
CAPACITY			
Nominal	kg/lb	24 (53)	35 (77)
DRUM DIMENSIONS			
Drum Volume	l	530	680
Drum Diameter	mm	Ø930	Ø930
AIRFLOW		950	1200
DRYING AVERAGE		0,384	0,560
MOTOR			
Fan	kW		0,55
Drive	kW		0,25
GAS HEATING			
Energy	kW	33/39	46/50
	kBTU/h	112,6/133,1	157,9/170,6
Electrical Connection		1x208V-240V 60HZ (3X380V-415V 50/60HZ)	
Gas Connection	Inch	3/4"	
STEAM HEATING			
Electrical Connection	Bar	3-6/7-10	
Energy	kW	27-36,2	39,3-52,7
	kBTU/h	92,1-123,5	134-179,8
Electrical Connection		1X208V-240V 60HZ (3X380V-415V 50/60HZ)	
Steam Connection	Inch	3/4"	
ELECTRICAL HEATING			
Electrical Connection		3X380V-415V 50/60Hz, 3X480V 60Hz	
Energy	kW	30/36	36/48
PROGRAMMER			
Easy Control – Antivandal (ECT)		Standard	
Professional Control (FCT)		+	
EXHAUST	mm	200	
DIMENSIONS			
HxWxD Unpacked	mm	1975x965x1270	1975x965x1490
HxWxD Packed	mm	2075x1040x1320	2075x1040x1540
WEIGHT			
Net	kg	275	305
Gross	kg	300	330

+ = available, The data concerning dimensions of machines include all extended parts

FRONT WLS 50 75

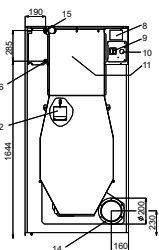


SIDE WLS 50 75



1. Programmer
2. Lock of the control panel
3. Emergency stop button
4. Lint screen cover
5. Door lock microswitch
6. Lint cover microswitch
7. Lint screen
8. Name plate
9. Main switch
10. Main power supply
11. Heating chamber
12. Air flow switch
13. Suction
14. Exhaust piping
15. Steam supply
16. Condense drain
17. Gas connection

BACK WLS 50 75
(STEAM MODEL)



BACK WLS 50 75

